

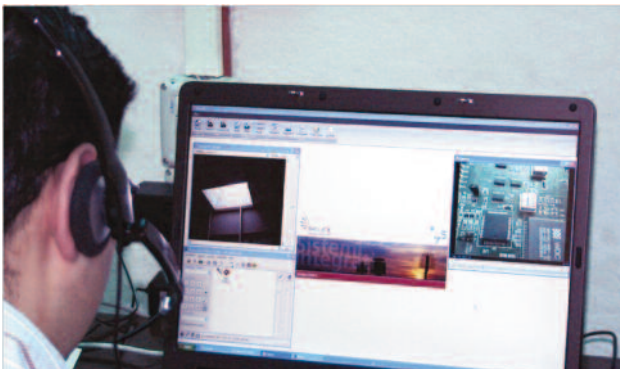
## V4M WORLD WIDE TELECOLLABORATION SYSTEM

V4M system has been designed to meet the rising expectations from industry of an IT-supported telecollaboration system. In fact large systems / high tech safety mission critical equipments require swift and adequate global maintenance. This activity, carried on by skilled technicians, has usually, in the product Lifecycle, a cost higher than the acquisition cost of the equipments to support.

Moreover the geographic distances between the supplier premises and the field installed equipments has a negative impact on the operating availability and the maintenance service costs.

V4M implements an Innovative Collaborative Work Environment (ICWE) for maintenance of large systems /

high tech safety mission critical equipments installed in a wide geographical areas as well as for training on them. V4M is an advanced real time web-based communication framework (audio, video, Augmented Reality) between expert technicians and World Wide remote sites where failed systems have to be restored by maintenance operators. It enables people located world wide to transmit video images in real-time and talking as well.

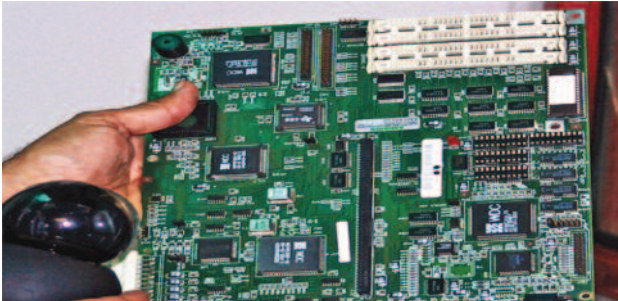


System V4M consists of a server - client sw architecture which permits a real time communication channel (VPN ) between the expert technician (server) and the maintenance operator (client). The server-client connectivity can occur regardless of geographical location of the expert as well as the maintenance operator and therefore you can refer to V4M as a system with world wide connectivity.

## V4M allows:

- To see in real time the actions carried out by the field operator and suggest the maintenance actions to fix a faulty system
- To support field activities with additional information transferred to the remote site as a knowledge forwarding.

## MAIN FEATURES



- Three cameras (two IP fixed and one portable USB high definition camera)
- Audio full-duplex, video half-duplex communication
- Real Time Audio Video Transmission (< 256Kbps Band)
- Wearable computer equipped with Ultra Mobile \_PC, Intel Atom 1,33 GHz.
- Fully wearable for hands free user
- World Wide real time video and voice communication:
  - UMTS
  - Satellite
  - LAN
- Recording and playback video streaming
- Snapshot capabilities
- Remote Terminal.
- See through HMD for Augmented Reality capability

## TECHNICAL DATA

PROCESSOR	Intel Atom 1,33GHz (Z520)
MEMORY	DDR2 1.0GB
COMMUNICATION	Built in HSPA modem (optional) * WLAN 802.11b/g * Internal 3G Huawei EM770W HSPA/UMTS 850/900/1900/2100MHz
DISPLAY	4.8" WSVGA (1024 x 600) with Touch Screen
INTEGRATED PORT	Audio,USB,VGA
POWER	(6hours movies play back); 22.9Wh
CONNECTIVITY	UMTS;SATCOM;LAN
AUGMENTED REALITY	HMD mono seetrough
OPERATING SYSTEM	Windows XP Professional Windows 7

## APPLICATIONS

- Remote monitoring and maintenance
- Remote training
- Recording and playback
- Field information management (IETM, maintenance, reports, etc)

## KEY BENEFITS



- Reduce the cost of maintenance processes
- Increase the quality of on-site maintenance
- Reduce unplanned technical interventions, through a prior diagnosis
- Safer maintenance
- Education, training and knowledge improvement
- Enhance Customer satisfaction

## ARCHITECTURE

V4M client-server architecture enables point to point communication between multiple users and multiple expert technicians regardless of their geographical location.

